

wellcome
collection

Event Spaces



conferencecentre@wellcome.ac.uk
wellcomecollection.org/eventspaces

020 7611 2200

⇨ ⊖ Euston ⊖ Euston Square

Ideal spaces for your events

Wellcome Collection offers thought-provoking event spaces to fuel your guests' imaginations. Whatever your needs, we can offer flexible and inspiring backdrops for all types of events, from seminars and training sessions to film screenings and AGMs, from product launches and awards ceremonies to dinners and drinks receptions. We want to make your event a success, so if you have any special requests, let us know!

Central London location

We're just over the road from Euston station, right next to Euston Square, and a short walk from King's Cross, St Pancras and Warren Street. And we're well-served by bus routes.

Variety

A great range of versatile, well-equipped rooms and spaces to host corporate and social events for small groups and large.

Bespoke food and drink

Our chefs will work with you to design a menu that suits your guests and your budget, whether it's a refreshment break or a working lunch, sumptuous canapés or fine dining. And we have an extensive wine list.

Beauty

A striking art deco building with original features complemented by modern designs. Fascinating, stimulating artworks and objects throughout.

Accessibility

To make all your guests welcome, we have step-free access to all rooms, induction loops, adapted toilets, wheelchairs to borrow, and accessible Blue Badge parking spaces to book. Assistance animals are welcome too.

Supporting ideas for health

All our profits fund Wellcome's charitable work, improving health by helping great ideas to thrive. Ask us about discounts for like-minded organisations.

Meetings and conferences

Our suite of rooms is perfect for meetings small and large, from interview panels and workshops to conferences, lectures and debates. You can hire rooms individually or in combination, with seating plans to suit. We can organise any catering you need. Rooms are well-equipped with AV and induction loops, plus computerised signage outside each. They're also decorated with curious artworks and objects – even the corridors have exhibits to browse during breaks. Free wifi throughout.



Capacities	Theatre	Classroom	Cabaret	Boardroom	U-shape
Henry Wellcome Auditorium	154	154	–	–	–
Franks Room	70	48	40	38	32
Steel Room	40	24	24	24	18
Franks & Steel combined	80	60	60	54	48
Dale Room	40	24	24	24	18
Burroughs Room	60	40	30	30	22

Receptions and dinners

Whether you want a space to welcome conference delegates or to network afterwards, to host an awards ceremony or to wine and dine VIPs, we can help. Our attractive rooms and our remarkable exhibition spaces are ready and waiting for you – and so are our chefs.



Capacities	Reception	Dinner
Williams Lounge	160	60
Franks Room	60	40
Steel Room	50	24
Franks & Steel (both)	120	60
Dale Room	50	24
Burroughs Room	75	30
Medicine Now gallery	200	–
Reading Room	160	–
Private Dining Room	–	40
Atrium	396	–



Atrium

Our ground-floor Atrium is Wellcome Collection's largest, most flexible event space. With a capacity of up to 396, it is ideal for events such as awards ceremonies, corporate celebrations and product launches.

The adjacent Wellcome Shop can work with you to host a book launch or literary awards ceremony.

From the ceiling hang a unique lighting cloud and an iconic Antony Gormley sculpture, and a dramatic spiral staircase designed by Stirling Prize-winning architects WilkinsonEyre reaches upwards.

This space offers a fantastic blank canvas where you can let your imagination run riot!



Medicine Now gallery

One of our engaging public exhibition spaces, Medicine Now also lends itself to private and unique evening reception events for up to 200, where curious minds are fed at every turn.

Medicine Now takes an intriguing look at modern scientific and medical issues around the world, as seen through the eyes of artists, scientists and patients, and provides a thought-provoking backdrop and talking point for the most lively of networking sessions.

Among other exhibits, you can see a four-foot jelly baby, a printout of the entire human genome sequence and a gastrointestinal camera the size of a baked bean. We can arrange a tour or your guests can explore themselves.

In conjunction with Medicine Now, we can also open the Medicine Man gallery. This is a treasure trove selected from Henry Wellcome's own collection, including rare items such as Charles Darwin's walking-stick, a Chinese torture chair and Florence Nightingale's moccasins.



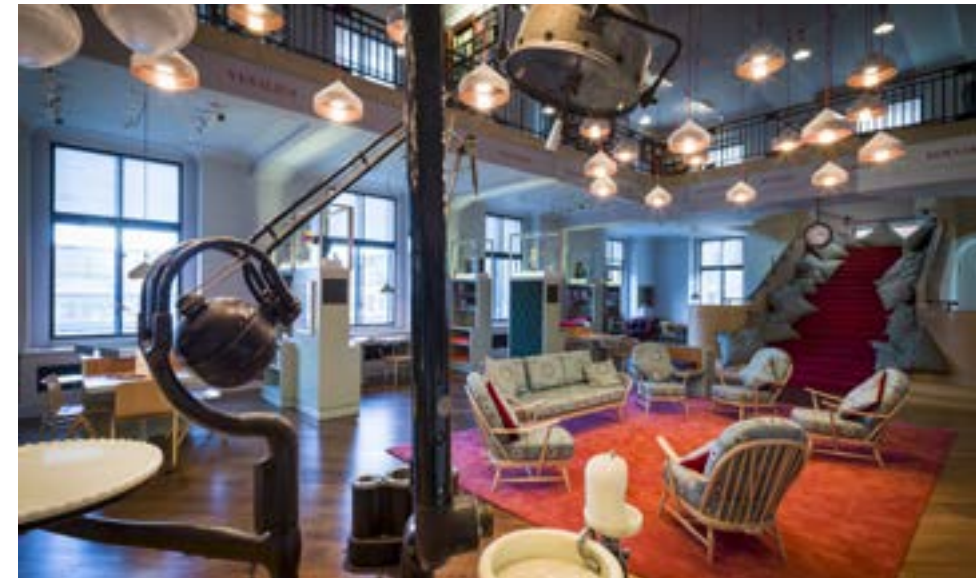
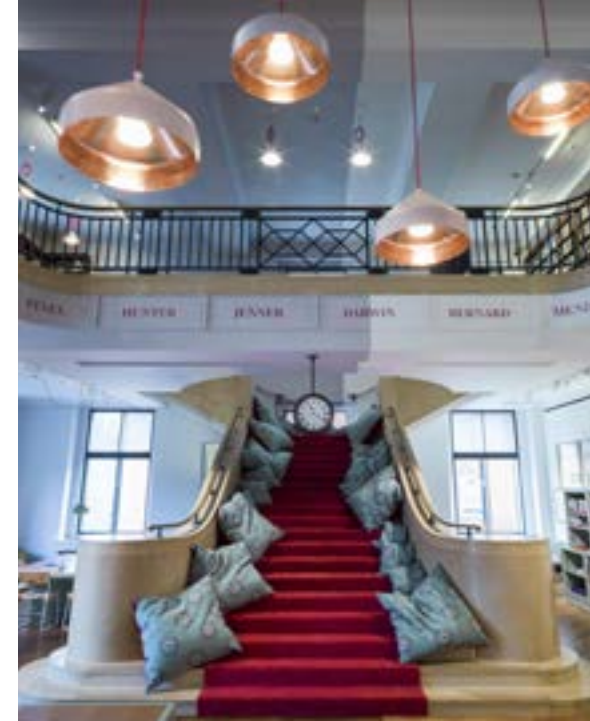
Reading Room

The Reading Room – part gallery, part library and part events space – is an experimental, interactive venue which was originally part of Wellcome Library.

Today it is a stunning, open space that offers a unique backdrop for post-conference networking, an awards ceremony or a drinks reception, hosting up to 160.

Here, you and your guests can explore over 1,000 books and 100 curious objects – including contemporary sculptures, paintings, medical artefacts and manuscripts – and dig a little deeper into what it means to be human.

And our Private Dining Room is just next door for you to treat VIP guests to a more intimate dinner.



Private Dining Room

The Private Dining Room is part of Wellcome Kitchen, the public restaurant in Wellcome Collection. It is a modern, bright and stylish space, with intriguing artworks on the walls and trees outside the second-floor windows. It offers a beautiful setting for an intimate private dinner of up to 40 people or a standing drinks reception for up to 100 guests.

Whatever your tastes, our chefs can design a bespoke menu with you to make your event special.

For a truly spectacular evening, you can book this room along with the Reading Room to host a VIP post-awards dinner or corporate celebration.



Henry Wellcome Auditorium

This spacious, tiered auditorium, seating up to 154, is great for a variety of events, from AGMs to film screenings. It has a stage and flexible top table for up to nine, armchair tables in every chair, and two aisles for easy movement. Traditional wood panelling perfectly balances original art deco features.

You can hire the Auditorium on its own for part or all of a day or in conjunction with any of our smaller rooms. It comes with the Williams Lounge, which is perfect for registering, networking and receptions.

An AV technician will help with the state-of-the-art facilities:

- data projection, with 4.40 x 2.44 m screen
- PA system with microphones
(four top-table, three tie-clip, two radio, one lectern)
- DVD/TV inputs available
- lectern with comfort monitor
- laptop plus remote mouse
- voting keypads
- audio recording
- free wifi
- hard-wired internet





Williams Lounge

This spacious breakout area comes with the Henry Wellcome Auditorium and is also available alone for evening events. It is ideal for delegate registration, sponsor stands, and serving food and drink.

The space contains two smaller, lockable glass offices, which you can use as organisers' offices, speakers' rooms or cloakrooms.

As well as free wifi, there are three PC terminals and a printer, so delegates and speakers can make last-minute changes to presentations or handouts.

The Williams Lounge has completely flexible seating, allowing for a café-style set-up perfect for daytime conferences, or cocktail tables for a post-event reception. Showcasing thought-provoking artworks, it can host 160 as a reception area or 60 for a seated dinner.



Franks and Steel Rooms

This flexible pair of rooms is highly sought-after for workshops and training sessions. You can use them individually or together – as a single space or divided into two individual areas, as your event requires.

They are both bright and spacious, and incorporate elements from Henry Wellcome's own collection.

When separated using the soundproof partition (60 dB protection), the Steel provides an intimate setting for a smaller board meeting, and the Franks is ideal for a medium-sized workshop.

Each comes well-equipped:

- data projector
- projection screen
- hard-wired internet
- free wifi
- remote mouse
- laptop

Capacities	Franks	Steel	Both
Theatre	70	40	80
Classroom	48	24	60
Cabaret	40	24	60
Boardroom	38	24	54
U-shape	32	18	48
Reception	60	50	120
Dinner	40	24	60



Dale Room

The Dale Room is a versatile space with plenty of natural daylight, making it great for workshops, training sessions or small board meetings – as well as intimate drinks receptions and dinners.

It comes well-equipped:

- data projector
- projection screen
- hard-wired internet
- free wifi
- remote mouse
- laptop

Capacities

Theatre	40
Classroom	24
Cabaret	24
Boardroom	24
U-shape	18
Reception	50
Dinner	24



Burroughs Room

The Burroughs Room is a wonderfully quiet meeting room with a semi-private terrazzo lobby that is ideal for registration, networking and catering. This sleek, contemporary room, decorated with stunning lightbox displays by Amy Shelton, is beautifully suited to training and networking events.

It comes well-equipped:

- data projector
- projection screen
- hard-wired internet
- free wifi
- remote mouse
- laptop

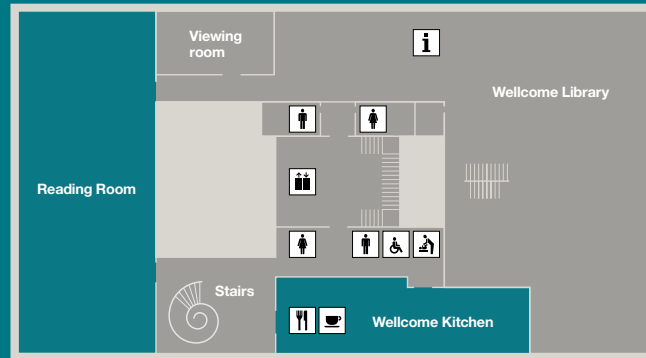
Capacities

Theatre	60
Classroom	40
Cabaret	30
Boardroom	30
U-shape	22
Reception	75
Dinner	30

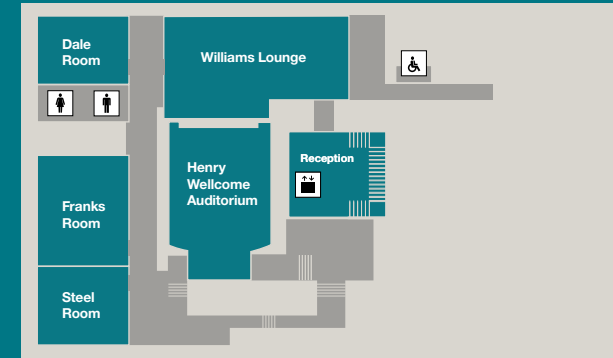


Our building

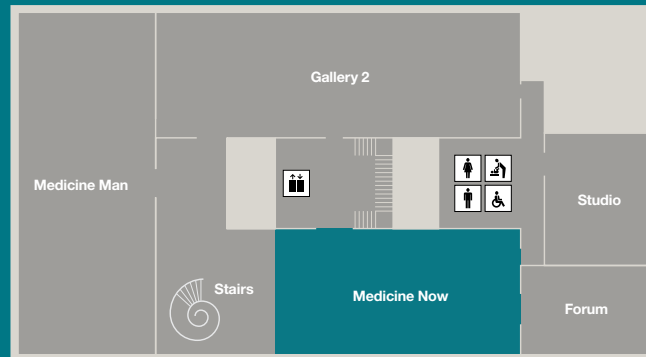
Level 2



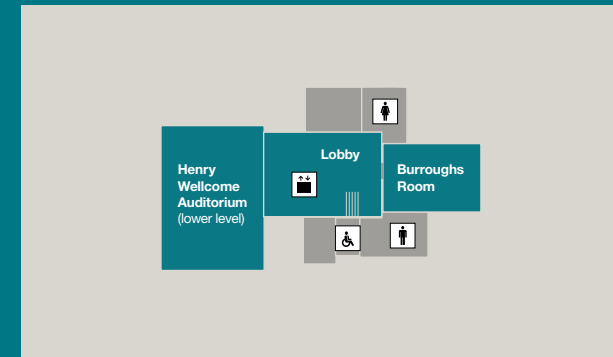
Level -1



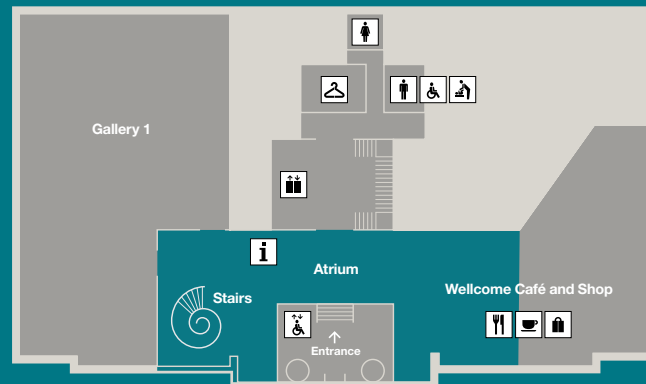
Level 1



Level -2



Level 0



Call us on 020 7611 2200

conferencecentre@wellcome.ac.uk



WINNER
Best London Event Venue
less than 500 attendees

Tell us how we can help you

Every event is unique, so we're ready to adapt and help you in whatever way we can. We'd love to talk to you about what you need and how we can help you make your event a success.

Call us:

020 7611 2200

Email us:

conferencecentre@wellcome.ac.uk

Find out more:

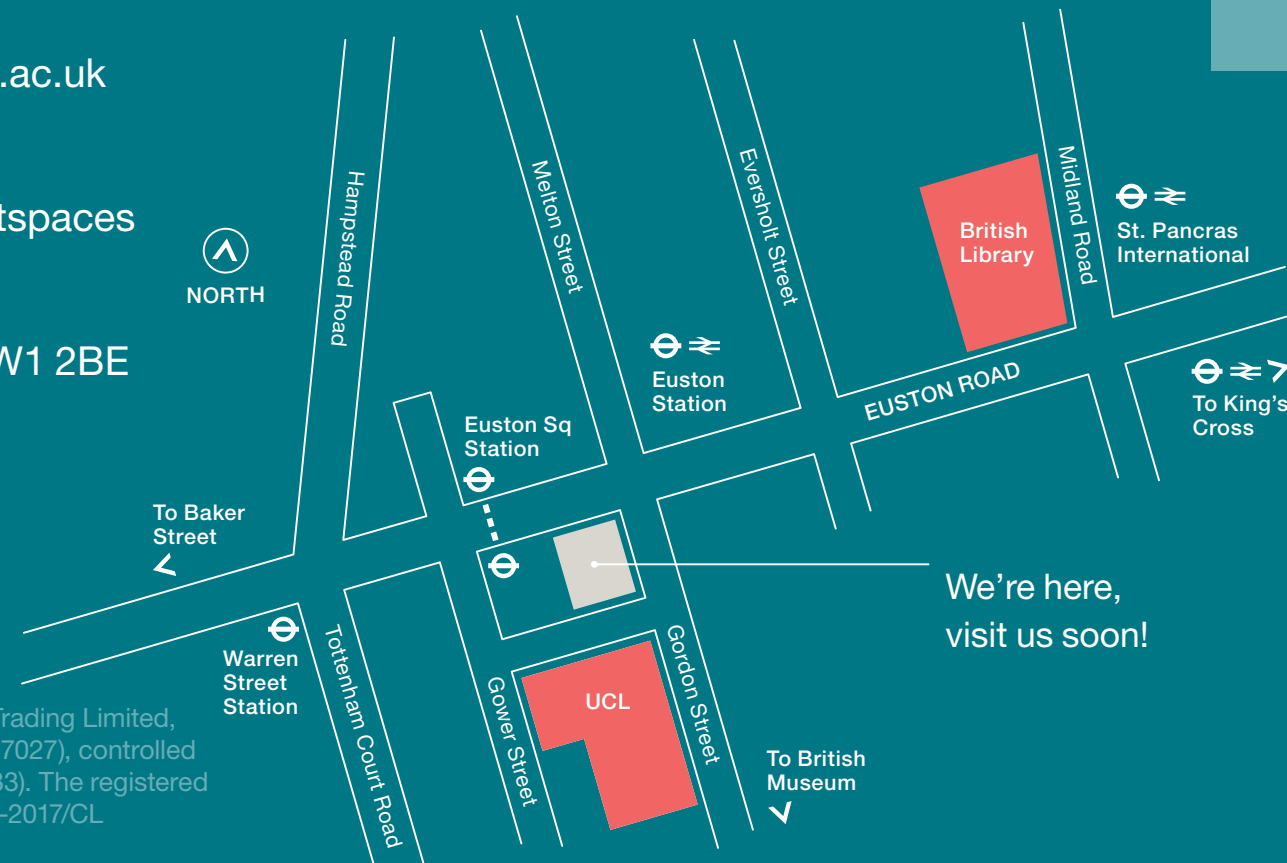
wellcomecollection.org/eventspaces

Visit us:

183 Euston Road, London NW1 2BE

Follow us:

 [@WellcomeConf](https://twitter.com/WellcomeConf)



We're here,
visit us soon!